

JOHN MOYLE MEMORIAL CONTEST - N1MM LOGGER SETUP 2026+

1. Assuming you have already installed N1MM Logger+.
(There are links on my page to help install it)
2. Download the N1MM User Defined Contest from vk4sn.com/Contests/N1MMVK.
3. Unzip the UDC.
 - a. READ THE PDF ON HOW TO SETUP THE CONTEST – Yep this file! 😊
 - b. Copy the WIA-JMMFD.udc file into
Documents\N1MM Logger+\UserDefinedContests
 - c. If it exists in the .zip file copy the Call history file into
Documents\N1MM Logger+\CallHistoryFiles
4. Open N1MM Logger
 - a. Click File – New Log in Database.
 - b. Drop down the ‘log type’ list and search for WIA-JMMFD in the left column.

ham.s3db

Select Contest Type for New Log

Log Type: WIA-JMMFD | WIA John Moyle Memorial Field Day

Start Date: 2025-11-08 01:00:00

Total number of contacts in database: 2745

Contest Associated Files

Populate All From Last Log Show Setup Show Rules

Category

Operator: SINGLE-OP

Band: ALL

Power: HIGH

Mode: SSB+CW

Overlay: YOUTH

Station: FIXED

Assisted: NON-ASSISTED

Transmitter: ONE

Sent Exchange: 001

Omit RST: CQWW: 05 SS: A 56 EMA

Operators: VK4SN

Soapbox:

Update Ops from Log

OK Help Cancel

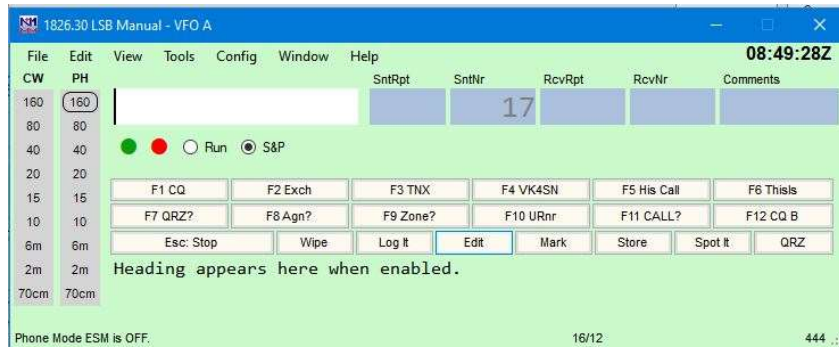
Note - the program does not validate categories. Check the contest rules for valid categories.

State for Log Type QSOPARTY

Time Category: 24-HOURS

- c. Fill in all drop down boxes to match your chosen category.
- d. Ignore the start date at the top.
- e. Select Youth if you are 25 years old or younger.
- f. Use your non-contest call in the Operators field with spaces between calls if a multi-op station.
- g. If the Call History is to be used, click on the Associated Files tab. Towards the bottom of the files tab you can browse for the call history to make it active.
- h. Click OK when done.

5. Entry Window



- To Allow all bands to show, right click on a blank area in the window and select 'Change Band Panel Display...'
- Tick the bands so they show as in the example above. If phone only was selected during the config stage, then only the PH column will show.
- Not only is the callsign entry box used for callsigns, but you can also enter a frequency in kilohertz, enter SSB, or CW to change the radio frequency or band. If you are a multi-op station, type OPON in the window and press enter. Enter the NON-Conest call of the operator taking control. This allows you to track operators and move the windows about to suit each user.
- If your radio is not connected to the PC, then typing in the frequency is needed if logging is to be correct. Clicking on the band down the left-hand side will also change to that band.

Good luck, best 73

de

Alan

VK4SN.com